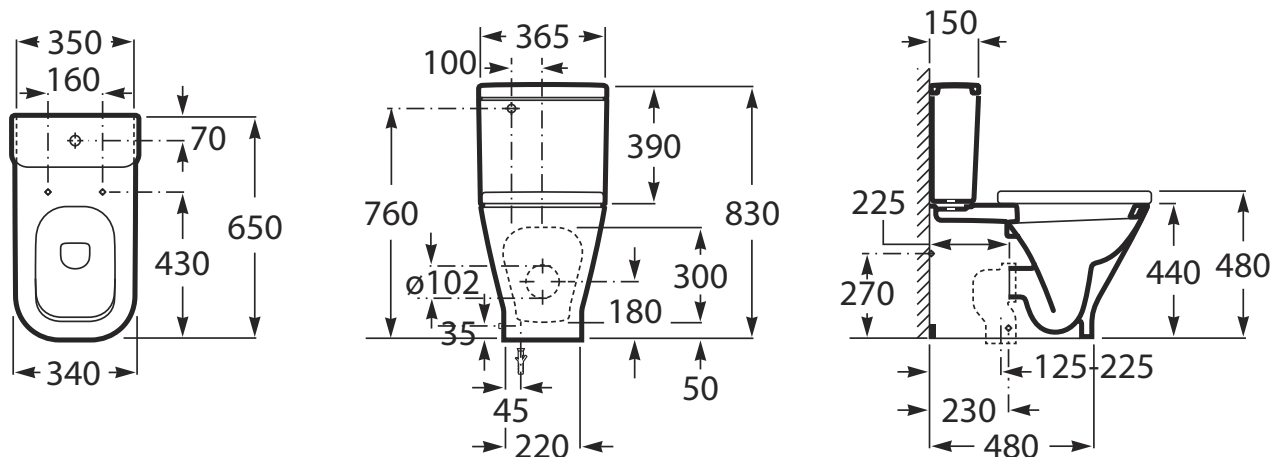


ROCA

THE GAP CLOSE COUPLED BACK TO WALL BACK INLET COMFORT HEIGHT TOILET SUITE



Dimensions are nominal measurements only

SPECIFICATION

Recommended Use	Domestic, hotel and commercial
Rim Configuration	Box Rim
Bowl Configuration	P Trap (Converts to S using plastic S-bend provided)
Pan Fixing	Screwed to the floor using brackets (supplied) and bedded with sealant
Cistern Fixing	Top-fix cistern bolted directly to the bowl
Seat	Matching top-fix, soft-close seat supplied with suite
Water Inlet	Back Inlet
Inlet Valve	Recommended max. working pressure 1000kPa
Weight	Pan: 33kg, Cistern: 10.7kg
WELS	4 Star WELS Rating 4.5/3 litres dual flush 3.3 litres average flush
Standards	AS1172



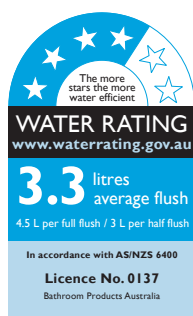
To see the complete Roca range go to
www.reece.com.au/bathrooms

CLEANING RECOMMENDATIONS

We recommend the use of soapy water or approved cleaners.

This product should not be cleaned with abrasive materials.

Damage caused by any improper treatment is not covered by the product warranty. Refer to Warranty Conditions.



Disclaimer: Products in this specification manual must by regulation be installed by licensed and registered trade people. The manufacturer/distributor reserves the right to vary specifications or delete models from their range without prior notification. Dimensions and set-outs listed are correct at time of publication however the manufacturer/distributor takes no responsibility for printing errors.

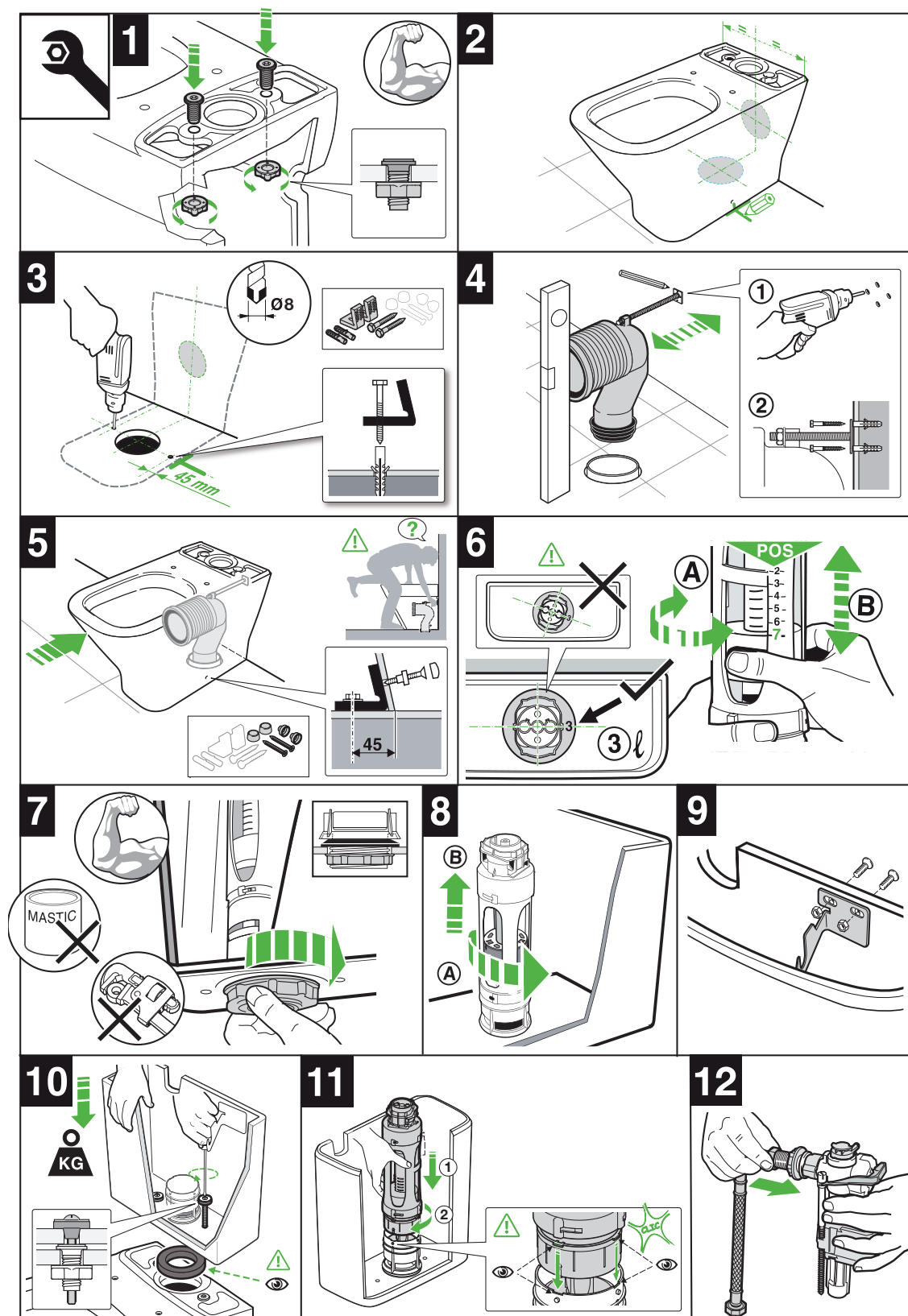
Tech Page Version 1



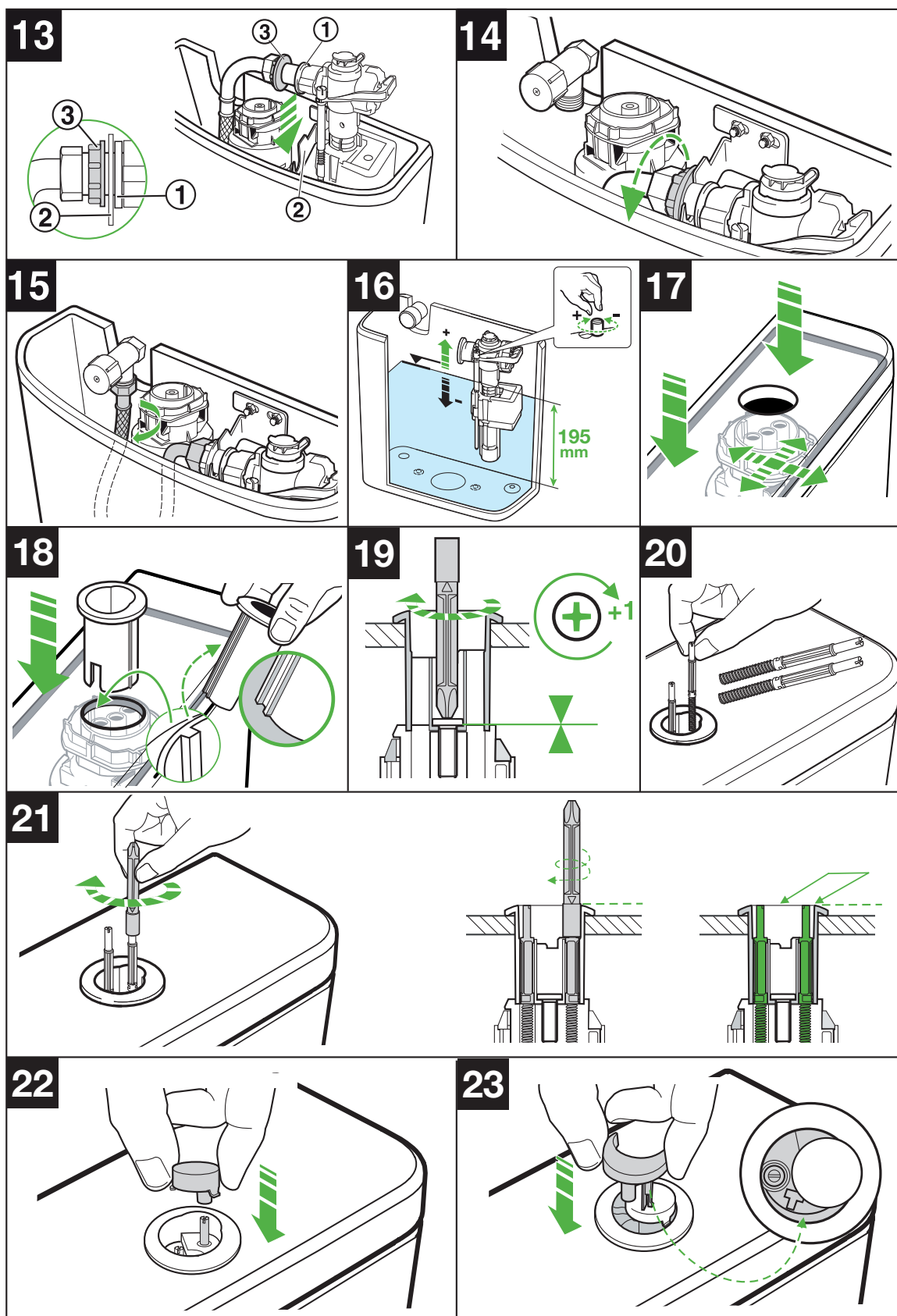
ROCA

THE GAP CLOSE COUPLED BACK TO WALL BACK INLET COMFORT HEIGHT TOILET SUITE

INSTALLATION INSTRUCTIONS

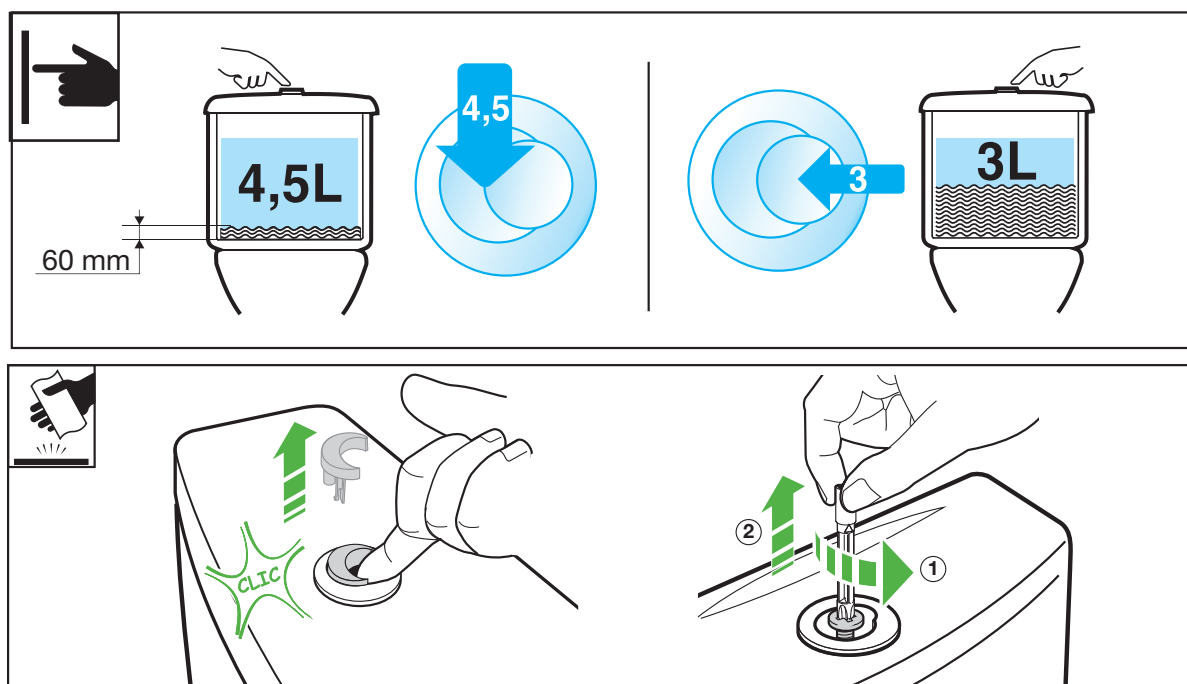


ROCA

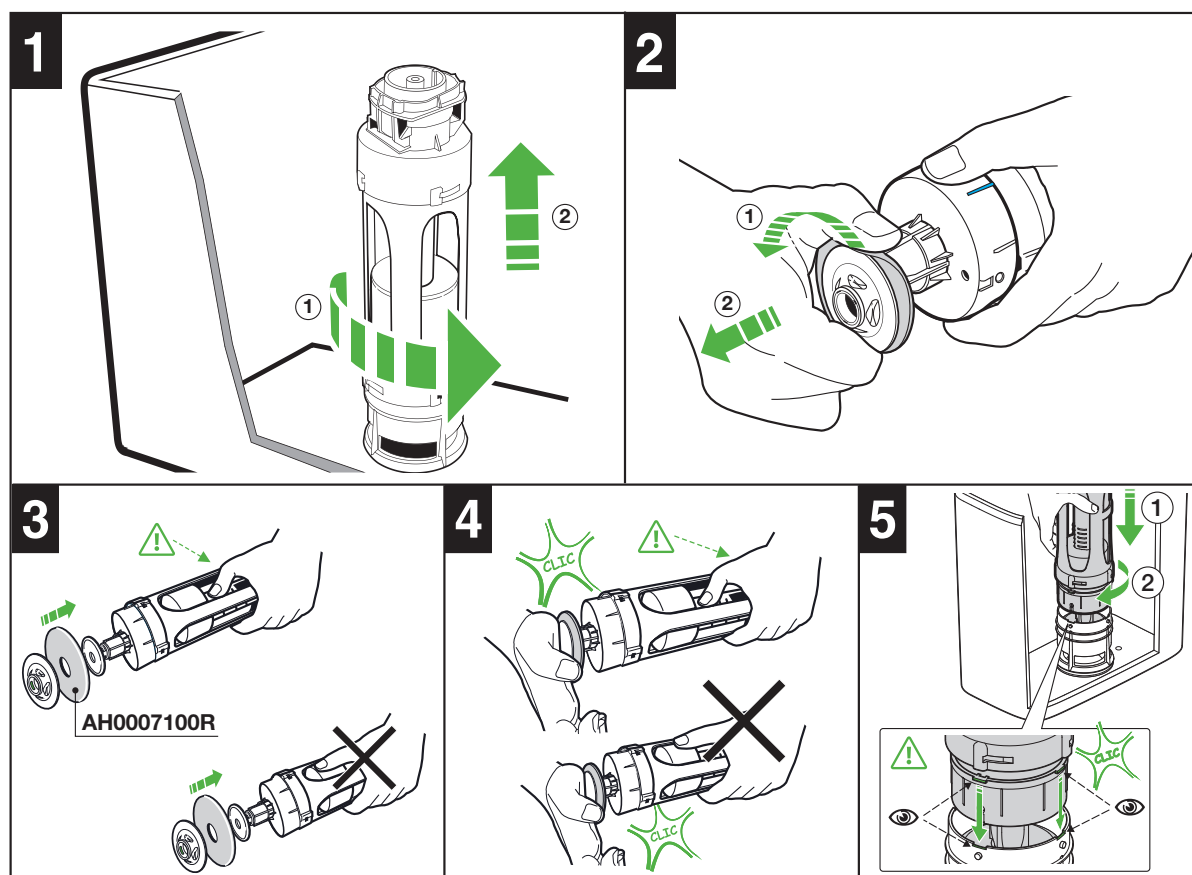
**THE GAP CLOSE COUPLED BACK TO WALL BACK INLET
COMFORT HEIGHT TOILET SUITE**

ROCA

THE GAP CLOSE COUPLED BACK TO WALL BACK INLET COMFORT HEIGHT TOILET SUITE



MAINTENANCE / REPLACEMENT OF OUTLET WASHER



Plumbers, please ensure a copy of the installation instructions is left with the end user for future reference

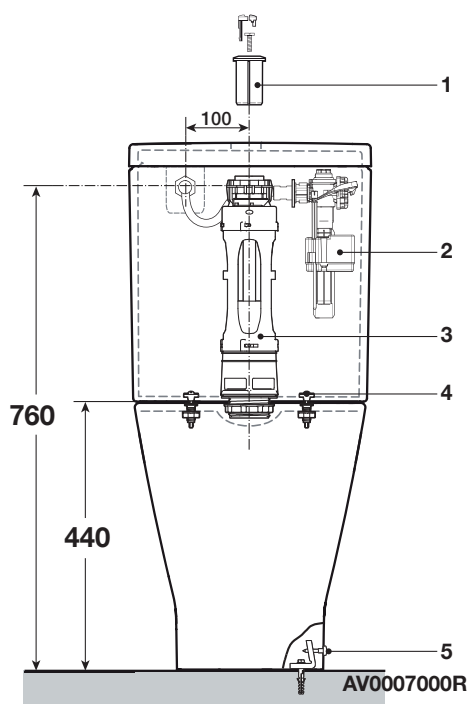
Roca

reece

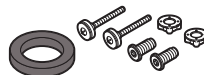
ROCA

THE GAP CLOSE COUPLED BACK TO WALL BACK INLET COMFORT HEIGHT TOILET SUITE

PARTS



- | | |
|----------------|--------------------|
| 1 - AH0001700R | Flush Button |
| 2 - A822096400 | Inlet Valve |
| 3 - AH0000100R | Outlet Valve |
| 4 - AV0028800R | Cistern Fixing Kit |



- | | |
|----------------|----------------|
| 5 - AV0009400R | Pan Fixing Kit |
|----------------|----------------|

